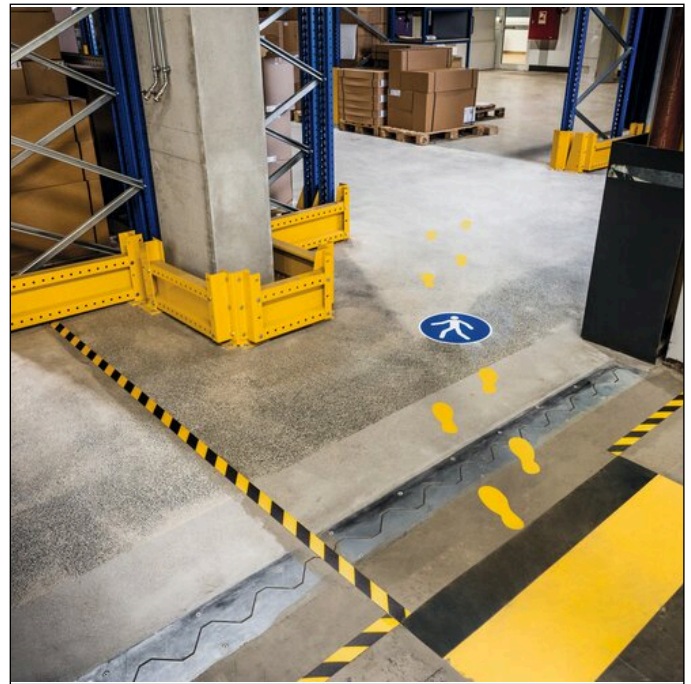


Mandatory sticker 'Use walkway' Ø 430 mm

Article number	173106	Sales unit quantity	1 Piece
Colour	Blue	Sales unit EAN	4005546983431
Packaging unit	1 piece	Packing weight (gross)	113.2 G
Base EAN	4005546983431	Country of origin	GB



Product description

- Symbol: "Use walkway", M024 to ISO 7010
- Self-adhesive, registered safety marking for application on floors in interior areas, e.g. in warehouses, distribution centres, production, etc.
- Abrasion resistant and hard-wearing

Product features

Outer height (mm)	1
Outer Ø (mm)	430
Brand	DURABLE
Shape	Round
Safety symbol type	Command sign
Symbol / Icon	Use pedestrian walkway
Technical standard symbol reference	M024 according to ISO 7010
Mark language	Neutral
Self-adhesive type	Permanent

Mandatory sticker 'Use walkway' Ø 430 mm

Adhesive strength	Normal
Abrasion resistance	Normal
Material thickness	0.4 mm
Special colour	Similar to RAL 3001 signal red
Colour	Red / white / black
Application area	Walking area, driving area
Technical standard	ASR A1.3, DIN EN ISO 7010, ASR A1.5/1,2 "Floors" according to DIN 51130 Slip resistance (R group) R9