

INSTRUCTIONS

With the self-adhesive Wrap-Up whiteboard foil you can turn smooth surfaces into a magnet-receptive whiteboard. Use the whiteboard surface to provide space for your creativity! Use it in your meeting room or seminar room, at school or at home, for brainstorming or lean sessions.

INFORMATION & DISCLAIMER

Recommended surfaces

The Wrap-Up whiteboard foil is designed to stick to a variety of surfaces. Wrap-Up is guaranteed to stick to:

- Glass
- Plexiglass and acryl glass
- Steel (not power coated)
- Metal (also painted and galvanized)
- Aluminum
- Plaster drywall surface according to level Q4
- White paints without antibacterial, fungicide or dirt resistance additives
- Chipboard or wood with wood primer treatment

PLEASE NOTE: the Wrap-Up whiteboard foil can only be guaranteed on the surfaces mentioned above and must be smooth, non-textured and not very absorbent. Not recommended for use on wallpaper, brick, fabric or textured surfaces. The surface should not be treated or painted with paint containing anti-bacterial, fungicidal, bactericidal or dirt-repellent additives, as well as easy clean wall paint. Please note that the colour of the paint, the number of paint layers and the type of paint can affect how the Wrap-Up whiteboard foil bonds to the underlying surface. Main rule: "if you feel it you will see it". Any irregularities in the wall may be visible through the Wrap-Up product surface.

In case of a non-suitable surface, there is an option to make walls suitable for Wrap-Up; the surface must be sanded off and „closed“ with other material such as dry wall finish, level Q4.

Surface preparation

If the surface is suitable for use, you should first clean it thoroughly. Ensure that it is dry and free from dust, dirt, grease and solvents.

Cutting the Wrap-Up

The Wrap-Up whiteboard foil can be cut into any shape you like. We recommend cutting the Wrap-Up with a utility knife.

User information

Do not fold or bend the Wrap-Up as this may cause permanent damage to the writing surface. The use of markers, pens or other non-drywipe writing instruments may result in damage to the Wrap-Up writing surface. Be careful with sharp objects on the Wrap-Up, as they could damage the surface. Writeability and wipeability are only guaranteed when used in combination with Legamaster board markers and Legamaster accessories.

We recommend vertical installation of the product. Room temperature may affect the behaviour of the material; a room temperature of approx. 20 degrees is optimal.

When installing sheets next to each other, please take into account that there may be a tolerance of approx. 0.5 mm per metre in the material.

Because tension can build in the material, when putting up more than two sheets next to each other we advise a 5-10mm overlap between the sheets.

Depending on the size, installation by two people is advised.

Test a small piece of Wrap-Up on the wall during a 24h test period to see best bonding results.

Storage information

Before use, the Wrap-Up can be stored for at least 3 years. This period is only applicable when stored at 15-25 °C and a relative humidity of 50-60%. To avoid possible pressure points, we recommend storing the Wrap-Up upright or laid flat. Store or transport in its original packaging only.

Removal of Wrap-Up

To remove the Wrap-Up whiteboard foil from the wall, select a corner and peel away from the wall slowly and smoothly.

PLEASE NOTE: removal of the Wrap-Up whiteboard foil from the wall may result in damage to the underlying (wall) surface. It can leave marks, tear off paint or damage the underlying (wall) surface.

Warranty information

The writing surface comes with a 3-year warranty when used in combination with Legamaster accessories.

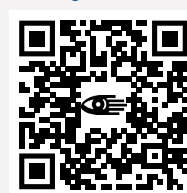
Legamaster cannot be held responsible for any loss or damage arising from this Legamaster product, whether direct, indirect, incidental or consequential.

All data and information are provided according to our best knowledge and are based on quality tests and experience. Our products undergo constant quality controls and development.

Installation video

Read the manual and watch the installation video carefully before installation!

www.legamaster.com/mounting



Wrap-Up

Part of the Space-Up writing collection

RECOMMENDED ADDITIONAL TOOLS

- Teflon BodyGuard knife (vinyl cutter with Teflon coating)
- Masking tape
- Utility knife
- Soft roller
- edding carpenter pen 8850
- Tape measure
- Spare blades



INSTALLATION

1. If the surface is suitable for use (see "Information"), you should first clean it thoroughly. Ensure that it is dry and free from dust, dirt, grease and solvents.
2. If you want to apply the Wrap-Up to a complete wall from top to bottom, we recommend applying the Wrap-Up sheets vertically.
3. Unroll the Wrap-Up on a flat, clean work surface. Cut the Wrap-Up to the desired length + 5cm using a sharp utility knife and a safety ruler.
PLEASE NOTE: if you want to wrap the complete wall, allow an extra 5 - 10 cm on all sides to absorb possible tolerances on the wall.



4. Pre-cut the paper on the back (30 cm) and fold in advance so that the paper can be peeled off with ease later on. Tip: use a Teflon BodyGuard knife.
PLEASE NOTE: do not remove the entire paper backing at this stage.



5. With the help of a second person, keep the Wrap-Up sheet taut and align the top edge with the wall.



6. Press firmly at the corners and along the top edge, using the squeegee provided to secure the product to the wall. Continue pressing firmly against the surface, moving any air bubbles out to the edge.



7. While pressing down on the top edge of the surface, continue to remove the backing 30cm at a time and repeat the smoothing-out action described in step 6 until the Wrap-Up is completely secured to the wall, without any air bubbles. Move the squeegee at angles of 30 degrees, making sure you overlap each time for best results. After the foil has completely bonded, we recommend using the squeegee to go over the entire Wrap-Up surface once again, pressing firmly to ensure optimum adhesion.



8. Remove any redundant Wrap-Up using a utility knife.



9. Use the soft roller to go over the entire Wrap-Up surface.

PLEASE NOTE: Do not use the WRAP-UP writing surface for at least 24 hours.

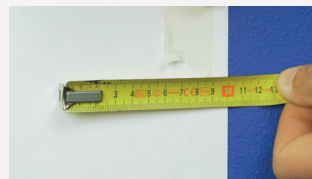


If you want to continue with more sheets:

10. Repeat steps 3 and 4.

Due to building tension in the material: when installing more than two sheets next to each other advised installation is with a 5-10mm overlap between the sheets.

11. Apply masking tape 10mm from the edge of the previous sheet.



12. Position the sheet along the tape. Secure the top edge. Repeat steps 6, 7, 8 and 9.

